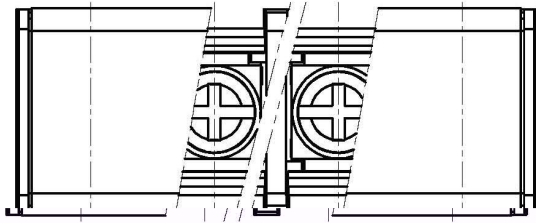
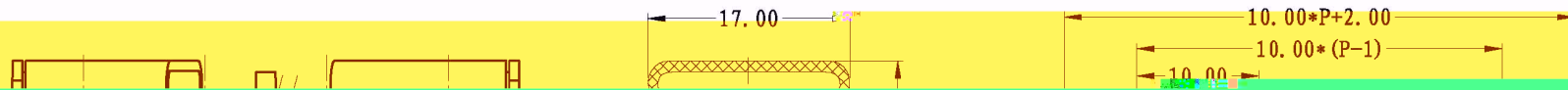


REVISION		RECORD	
REV.	CONTENT	MOD.	DATE
①	初版发行		



NOTES:
 Pitch: 10.0mm
 Rated Voltage: 300V
 Rated Current: 20A
 Withstand Voltage:
 AC2500V for 1 minute
 Insulation Resistance:
 5MΩ / DC500V
 Using Temperature Range:
 -40℃ ~ +130℃
 Wire range: 22~12 AWG
 Screw Torque Value: 1.2Nm

技术要求:
 间距: 10.0mm
 额定电压: 300V
 额定电流: 20A
 耐电压值: AC2500V/min
 绝缘阻抗: 5MΩ/DC500V
 使用条件: -40℃~+130℃
 适用线规: 22~12 AWG
 螺丝扭矩: 1.2Nm



REV. 01	DATE 2023.08.15	DESIGNER 张三	CHECKER 李四	APPROVER 王五	STATUS 待审核	REV. 02	DATE 2023.08.20	DESIGNER 张三	CHECKER 李四	APPROVER 王五	STATUS 已审核
---------	-----------------	-------------	------------	-------------	------------	---------	-----------------	-------------	------------	-------------	------------